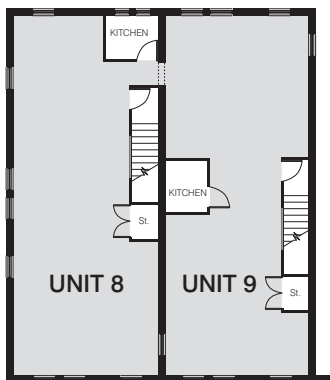
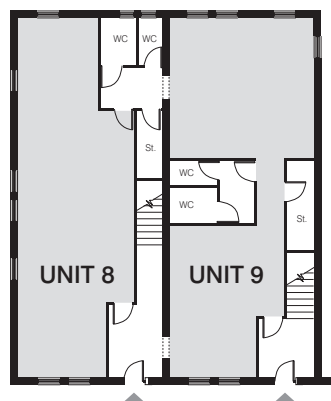


Feast Field



First Floor Plan



Ground Floor Plan

Units 8 and 9 - 1,500 - 3,000 sq.ft.

Specification

- Two storey, self-contained building
- Male and female toilets
- Kitchen
- Fully refurbished
- Modern suspended ceilings
- LED lighting
- Gas fired central heating
- New quality carpeting and decorations
- Shower
- Partitioned meeting room

Parking

6 car spaces per unit

Rateable Value

£17,000 - £34,000

Jack Lunn

PROPERTY CONSULTANTS
wsb
www.wsbproperty.co.uk
0113 234 1444

**CARTER
TOWLER**
0113 245 1447
www.cartertowler.co.uk