

Anglia House



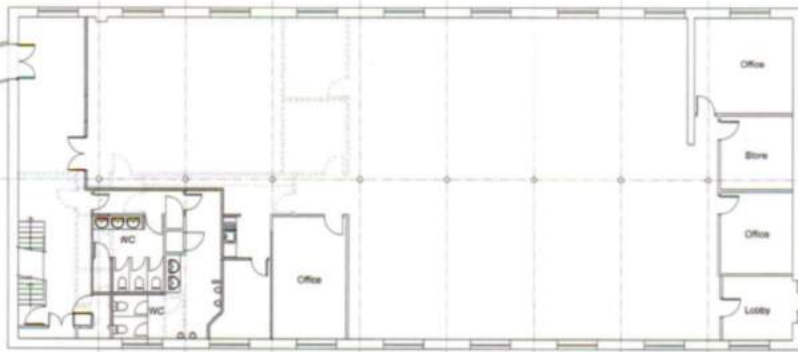
Anglia House is a large commanding building, offering three open plan levels with fantastic views over the valley; available as a whole, or split into separate floors.

Floor 1 (Ground Floor)

This floor can be accessed from a choice of two external entrances, or via the covered walkway from The Fabric House into a spacious lobby/reception area, offering a flexible joint or self-contained arrangement.

The office features a fully tiled dropped ceiling of 2.5m height and windows down the full length of both sides, providing an airy and spacious area, ideal for a relaxed and creative working environment.

A stairwell provides access to Floor 2 if required.



FIRST FLOOR PLAN 4,557SQ FT



PROPERTY CONSULTANTS

wsb

www.wsbproperty.co.uk

0113 234 1444



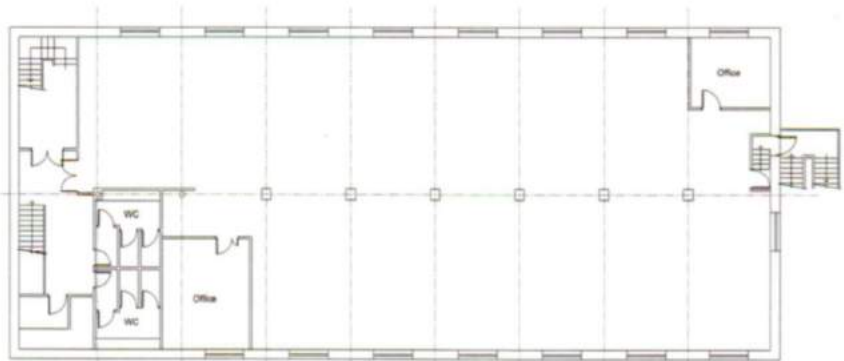
Second Floor

Floor 2 can be accessed from an external door and up the main stairwell past Floor 1. This can easily be adapted for joint or self-contained use.

The office features a fully tiled dropped ceiling of 2.5m height and windows down the full length of both sides, providing an airy and spacious area.

This floor also offers two separate smaller offices, which can be used or re-integrated into the main space as required, along with a tea making area and ladies' and gents' bathrooms.

From a spacious landing/lobby area, the stairwell gives access to the entrance door and there is a separate staircase up to Floor 3 if required.



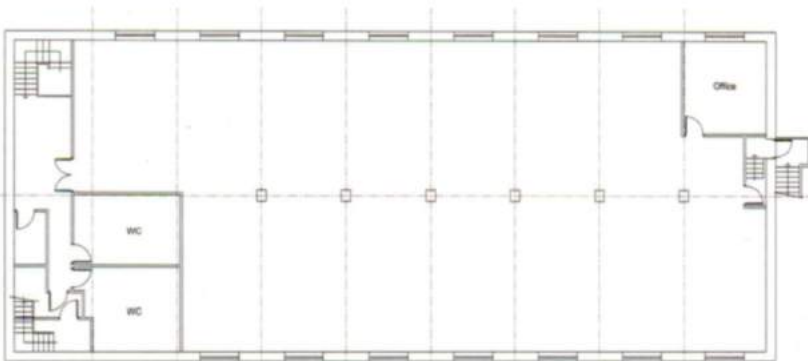
SECOND FLOOR PLAN - 4,847 SQ FT

PROPERTY CONSULTANTS

wsb

www.wsbproperty.co.uk

0113 234 1444



THIRD FLOOR PLAN - 4,750 SQ FT

Third Floor

Floor 3 can be accessed from an external door and up the main stairwell past Floor 1 and 2. This can easily be adapted for joint or self-contained use.

The office features a fully tiled dropped ceiling of c2.5m height and windows down the full length of both sides giving far reaching views, once again providing an airy and spacious area.

This floor has one separate smaller office, which can be used or re-integrated into the main space as required, along with a tea making area and ladies' and gents' bathrooms.