



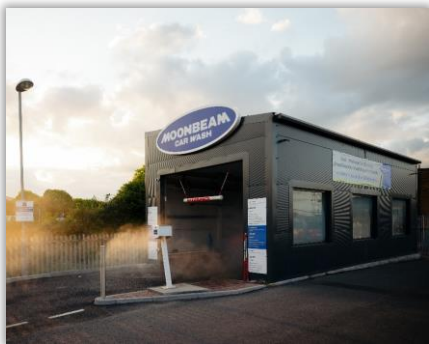
Land Required for state-of-the-art Car Wash

At Moonbeam we are investing in state-of-the-art Car Wash's – An unmanned, brushless car wash looking to modernize a core UK Industry.

Currently operating a successful pilot in Hull, Moonbeam are now looking to scale up across the UK.

Increases dwell time and consumer experience at retail parks.

Enhances site ESG credentials through solar and water recapture system.



What it is



Offering consumers, a high-quality and reliable wash, whilst satisfying demands for convenience and sustainability.

How it works



Moonbeam provides zero contact "Brushless" car washes, with an innovative digitally enabled offering designed to promote consumer loyalty.

What are we looking for:

- Sites situated on highly transient and urban commuter routes nationwide.
- Sites between 0.2 to 0.5 acres.
- Prominent roadside locations.
- Foodstore Car Parks
- Retail Park Car Parks
- Standalone sites or sites forming part of larger developments.

Terms:

- Freehold
- All planning, development, infrastructure and maintenance costs paid for by Moonbeam.
- Potential for increased footfall to existing developments.

Please send details to

- Adam Mobley MRICS – Partner
- Mobile 07587 133540
- Email amobley@wsbproperty.co.uk

