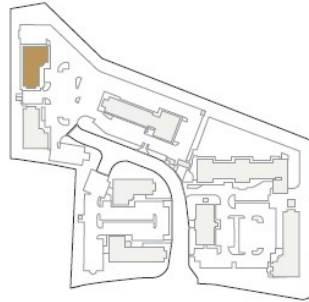


Richmond House

Building Specification

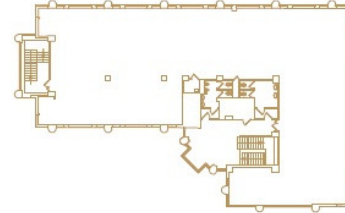
- New entrance and reception area
- Ground and First floor benefit from dedicated air conditioning
- Ground floor office space redecorated and carpeted
- First floor office refurbished to include new ceilings and lighting
- Second floor in good condition and benefits from additional refrigerant based cooling system installed by tenant
- 8-person passenger lift

Building Location



Floor Plans - Indicative

Typical Upper Floor



Floor Areas

Property	Floor	NIA Area (SQ FT)	NIA Area (SQ M)	IPMS 3 Area (SQ FT)
Richmond House	Second	4,678	434.60	4,890
	First	4,670	433.90	4,839
	Ground	4,689	435.60	4,851
	Total	14,037	1,304.10	14,580

